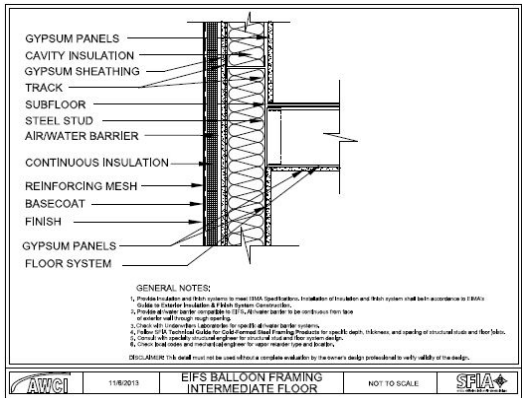


[Curtain Walls](#) | [Exterior Structures](#)

[Interior Structures](#)
[Nonstructural](#)
[CFS to CLT](#)

Construction Details - Exterior Structures

EIFS Balloon Framing Intermediate Floor



PDF

DWG

Stucco Balloon Framing Intermediate Floor



GYPSUM PANELS
CAVITY INSULATION
GYPSUM SHEATHING
TRACK
SUBFLOOR
STEEL STUD
AIR/WATER BARRIER
CONTINUOUS INSULATION
LINE OF FINISH
GYPSUM PANELS
FLOOR SYSTEM

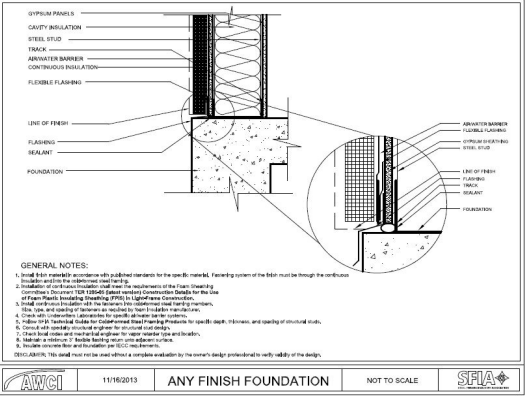
GENERAL NOTES:

1. Install FRP membrane in accordance with manufacturer's instructions for the specific FRP. Fastening system of the FRP must be through the insulation, sheathing, and into the structural steel stud.
2. Insulation thickness and cavity insulation must be 1/2" minimum.
3. Gypsum panels must be installed in accordance with the manufacturer's instructions. Minimum 1/2" (1/2" minimum) gypsum sheathing is required for the use of FRP panels. Insulation thickness must be 1/2" minimum.
4. FRP panels must be installed in accordance with the manufacturer's instructions.
5. FRP panels must be installed in accordance with the manufacturer's instructions.
6. FRP panels must be installed in accordance with the manufacturer's instructions.
7. FRP panels must be installed in accordance with the manufacturer's instructions.
8. FRP panels must be installed in accordance with the manufacturer's instructions.
9. FRP panels must be installed in accordance with the manufacturer's instructions.
10. FRP panels must be installed in accordance with the manufacturer's instructions.

DISCLAIMER: This detail must not be used without a complete evaluation by the owner's design professional to verify the details of the design.

AWCI **1/15/2013** **ANY FINISH BALLOON FRAMING INTERMEDIATE FLOOR** **NOT TO SCALE** **SFIA**

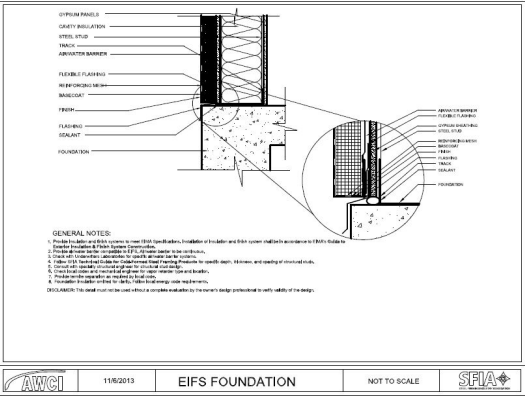




PDF

DWG

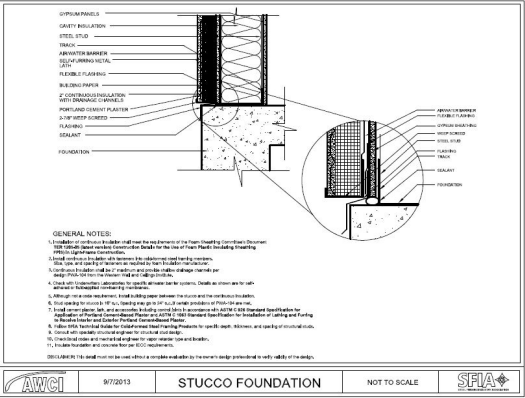
EIFS Foundation



PDF

DWG

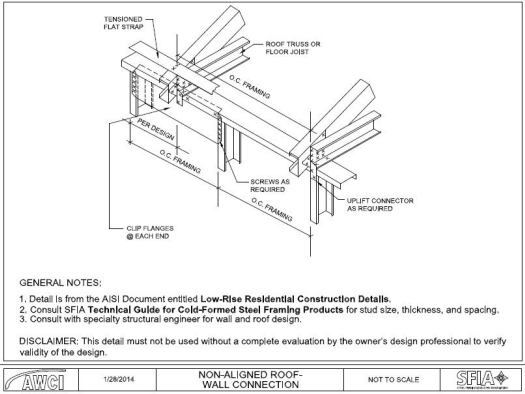
Stucco Foundation



PDF

DWG

Non - Aligned Roof Wall Connection



PDF

DWG

Roof Eve and Soffit



GENERAL NOTES:

1. Single flash membrane in accordance with published details for the specific material. Fastening system of the flash must be through the continuous insulation and into the unobstructed steel framing.
2. Integrity of continuous insulation shall be maintained throughout the entire roof assembly.
3. Consult the Manufacturer TCR 133045 (Detail various) Construction Details for the Line of Frame Purlins (Including Sheathing, Purlin, & Light Gauge Steel Deck).
4. Single flash membrane in accordance with published details for the specific material. Fastening system of the flash must be through the continuous insulation and into the unobstructed steel framing members. Size, type, and spacing of fasteners as required by the insulation manufacturer.
5. Provide airtight barrier compatible with selected flash. Air Bar/Water Barrier to be continuous from the base of the wall, over the parapet, and to the roof edge. Air Bar/Water Barrier for use and as an underlayment or full-sheeped non-sheathing membrane.
6. Check with independent laboratory for specific details for barrier systems.
7. Follow the IFA Technical Guide for Cold-formed Steel Framing Products for specific design.
8. Minimum one spacing of structural steel to steel connection.
9. Minimum one spacing of structural steel to steel connection.
10. Connect all secondary unobstructed members for structural steel and roof system design.
11. Check with independent engineer for proper, regulated gable and brackens.
12. Details with "R" or "S" design loading must be subject to approval.

DISCLAIMER: This detail may not be used without a complete evaluation by the owner's design professional to verify the adequacy of the design.

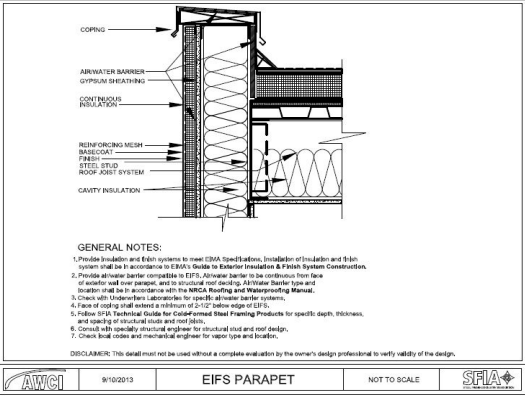
11/16/13

ANY FINISH PARAPET

NOT TO SCALE



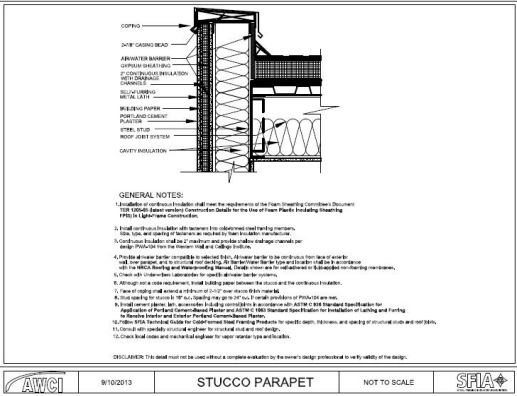
Exterior Details



PDF

DWG

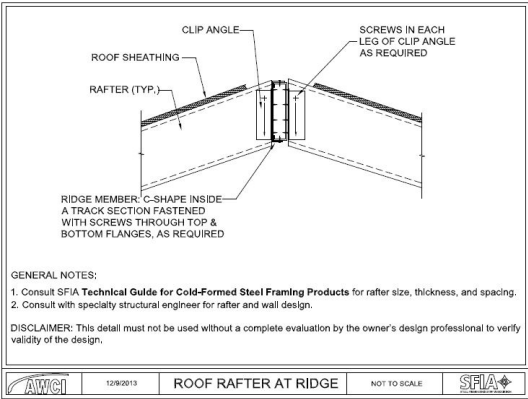
Stucco Parapet



PDF

DWG

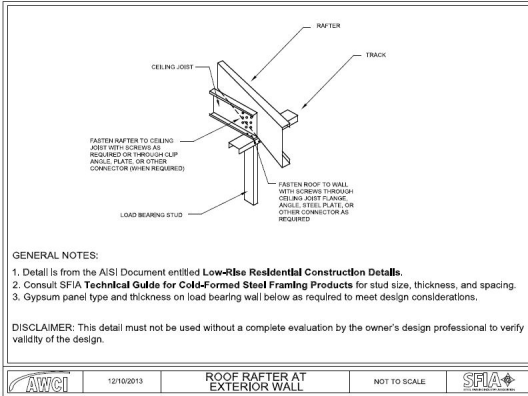
Roof Rafter at Ridge



PDF

DWG

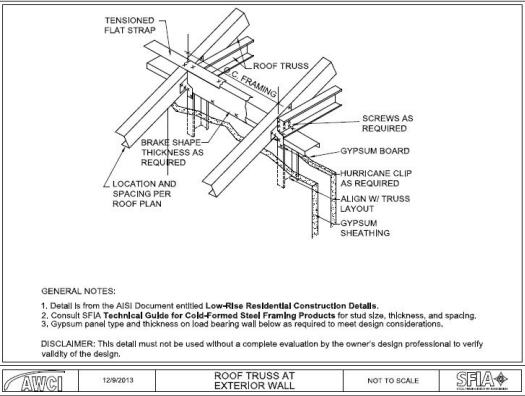
Roof Rafter at Exterior Wall



PDF

DWG

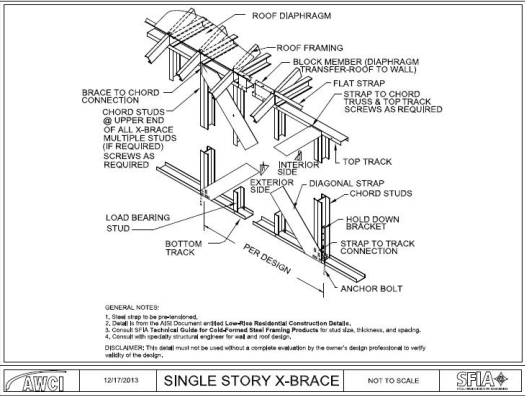
Roof Truss at Exterior Wall



PDF

DWG

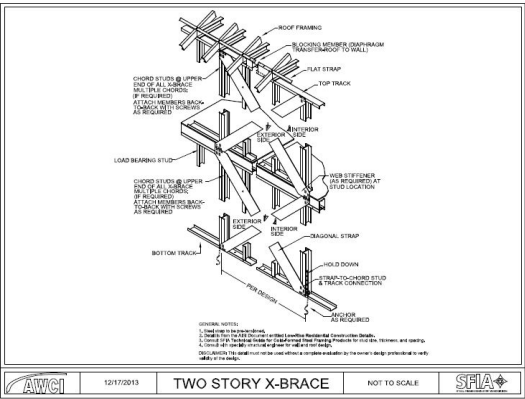
Single Story X Brace



PDF

DWG

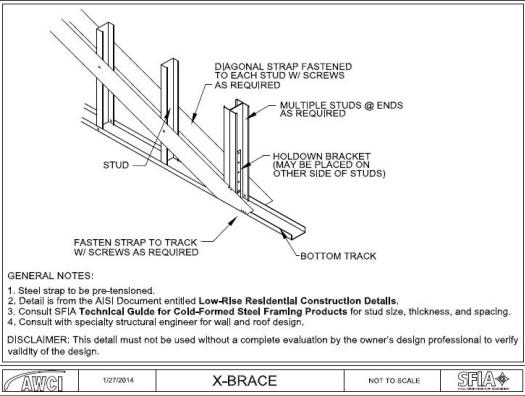
Two Story X Brace



PDF

DWG

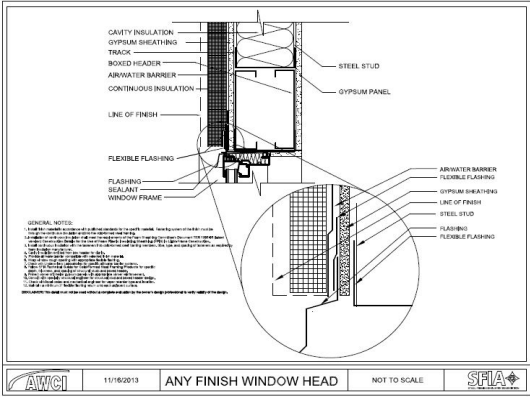
X Brace



PDF

DWG

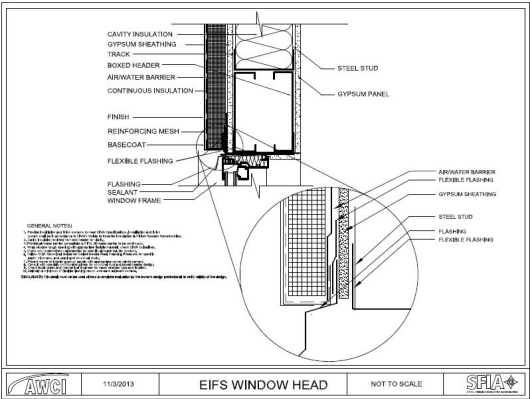
Any Finish Window Head



PDF

DWG

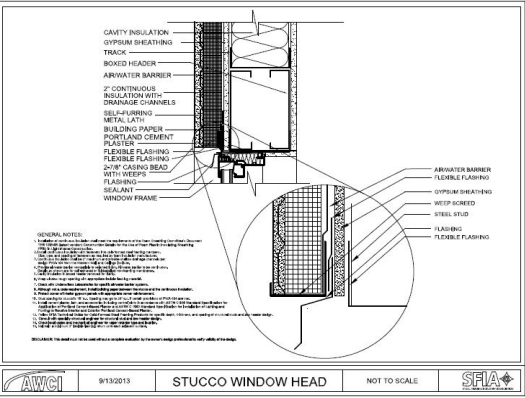
EIFS Window Head



PDF

DWG

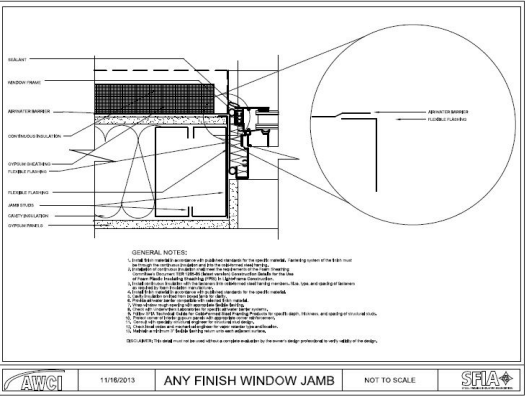
Stucco Window Head



PDF

DWG

Any Finish Window Jamb



PDF

DWG

EIFS Window Jamb





WINDOW FRAME
SEALANT
SILL PAN
FLEXIBLE FLASHING
SEALANT
REINFORCING MESH
BASECOAT
CONTINUOUS INSULATION
AIR/WATER BARRIER
FINISH
GYPSUM SHEATHING
TRACK
CAVITY INSULATION
STEEL STUD

WINDOW FRAME
SEALANT
AIR/WATER BARRIER
GYPSUM SHEATHING
FINISH
REINFORCING MESH
BASECOAT
SEALANT

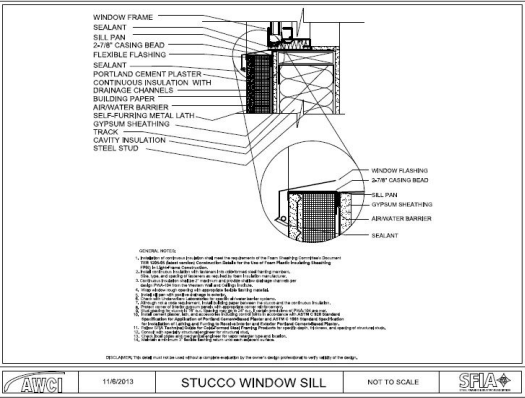
GENERAL NOTES:

1. Provide Sealant and Sill pan to meet Sill Pan Flashing, Installation of Sealant and Sill pan and to be in accordance to Sill Pan Guide for Exterior Insulation & Finish System Construction.
2. Sealant must be applied to the Sill Pan Flashing and the Sill Pan Flashing must be applied to the Sill Pan Flashing.
3. Sealant must be applied to the Sill Pan Flashing and the Sill Pan Flashing must be applied to the Sill Pan Flashing.
4. Sealant must be applied to the Sill Pan Flashing and the Sill Pan Flashing must be applied to the Sill Pan Flashing.
5. Sealant must be applied to the Sill Pan Flashing and the Sill Pan Flashing must be applied to the Sill Pan Flashing.
6. Sealant must be applied to the Sill Pan Flashing and the Sill Pan Flashing must be applied to the Sill Pan Flashing.
7. Sealant must be applied to the Sill Pan Flashing and the Sill Pan Flashing must be applied to the Sill Pan Flashing.
8. Sealant must be applied to the Sill Pan Flashing and the Sill Pan Flashing must be applied to the Sill Pan Flashing.
9. Sealant must be applied to the Sill Pan Flashing and the Sill Pan Flashing must be applied to the Sill Pan Flashing.
10. Sealant must be applied to the Sill Pan Flashing and the Sill Pan Flashing must be applied to the Sill Pan Flashing.

©2014 Owens Corning Fiberglas. This model can not be used without a complete and valid Owens Corning Fiberglas product label and the design of the design.

AWICI 11/15/2013 **EIFS WINDOW SILL** NOT TO SCALE **SFIA**





PDF

DWG