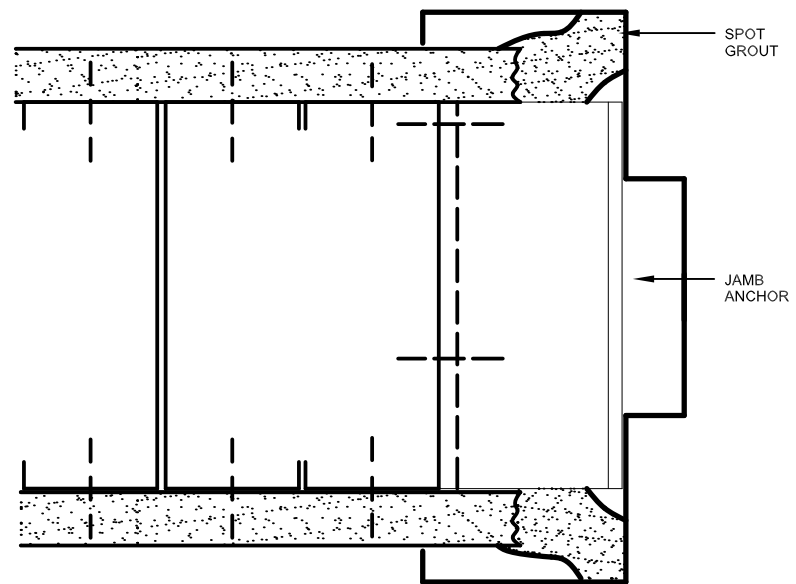


ELEVATION



JAMB
SECTION A-A

GENERAL NOTES:

1. Recommendations per **USG Construction Handbook**.
2. Special engineering for doors over 4'-0" wide, double doors and extra heavy weighing over 300 lbs. The design should include both door jamb and head conditions.
3. Section A-A illustrates one potential solution.
4. Detail intended for nonstructural applications.
5. Stud depth, spacing and thickness based on height of wall and design load. Consult **SFIA Technical Guide for Cold-Formed Steel Framing Products** for limiting heights.
6. Gypsum panel type and thickness as required to meet design considerations.
7. Check with USG for clarification on spot-grouting and its potential requirement.

DISCLAIMER: This detail must not be used without a complete evaluation by the owner's design professional to verify validity of the design.