

WINDOW FRAME

SEALANT

SILL PAN

FLEXIBLE FLASHING

SEALANT

CONTINUOUS INSULATION

AIR/WATER BARRIER

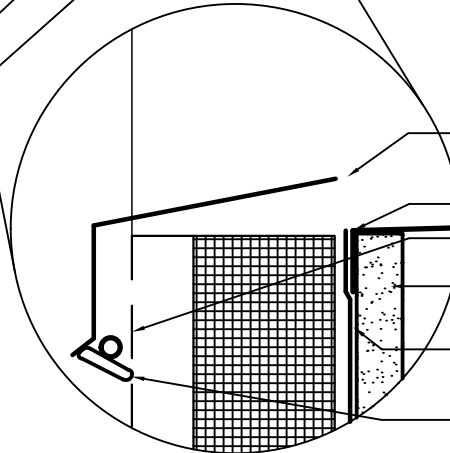
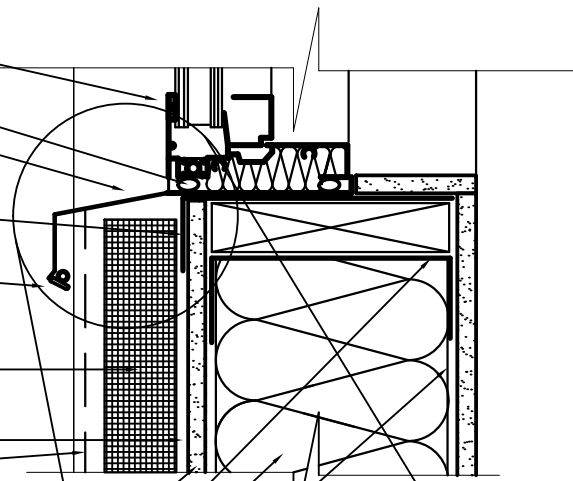
LINE OF FINISH

GYPSUM SHEATHING

TRACK

CAVITY INSULATION

STEEL STUD



WINDOW FLASHING

SILL PAN

LINE OF FINISH

GYPSUM SHEATHING

AIR/WATER BARRIER

SEALANT

GENERAL NOTES:

1. Install finish material in accordance with published standards for the specific material. Fastening system of the finish must be through the continuous insulation and into the cold-formed steel framing.
2. Installation of continuous insulation shall meet the requirements of the Foam Sheathing Committee's Document **TER 1205-05 (latest version) Construction Details for the Use of Foam Plastic Insulating Sheathing (FPIS) in Light-Frame Construction.**
3. Install continuous insulation with the fasteners into cold-formed steel framing members. Size, type, and spacing of fasteners as required by foam insulation manufacturer.
4. Wrap window rough opening with appropriate flexible flashing material.
5. Install sill pan with positive drainage to exterior.
6. Check with Underwriters Laboratories for specific air/water barrier systems.
7. Follow SFIA **Technical Guide for Cold-Formed Steel Framing Products** for specific depth, thickness, and spacing of structural studs.
8. Protect corner of interior gypsum panels with appropriate corner reinforcement.
9. Consult with specialty structural engineer for structural stud.
10. Check local codes and mechanical engineer for vapor retarder type and location.
11. Maintain a minimum 3" flexible flashing return unto each adjacent surface.

DISCLAIMER: This detail must not be used without a complete evaluation by the owner's design professional to verify validity of the design.